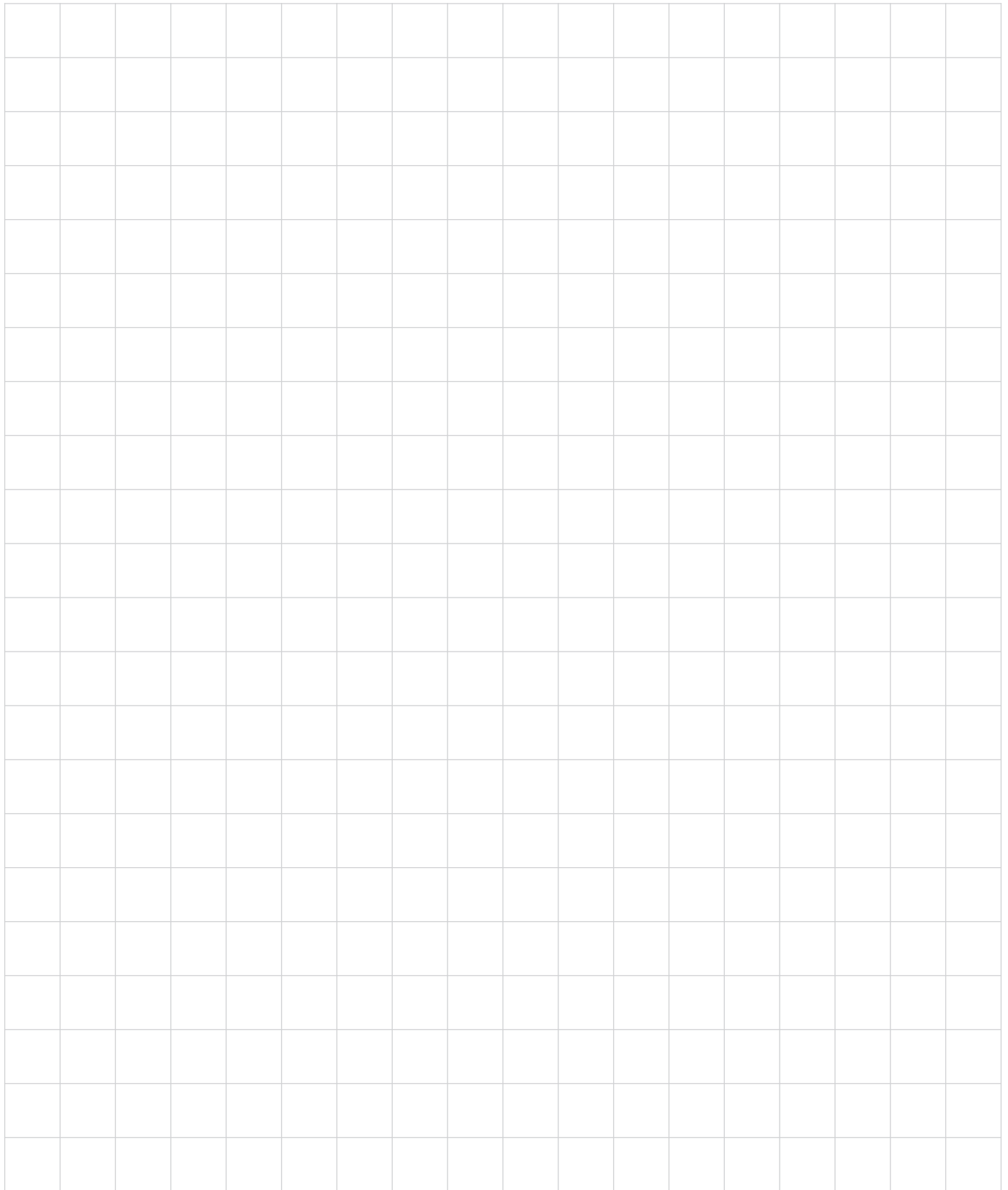
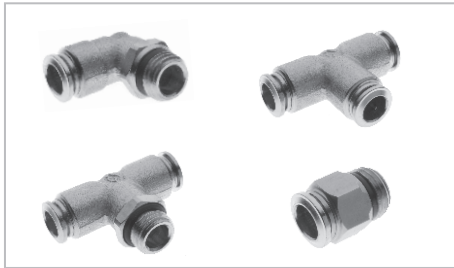


Racores

Conectores neumáticos en diferentes materiales para las aplicaciones neumáticas:

- ∨ Metálicos (Bronce)
- ∨ Acero Inoxidable
- ∨ Plásticos (PBT)





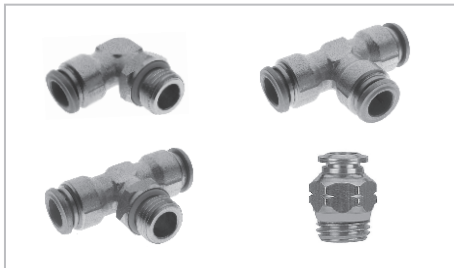
Racores Metálicos

Racores Metálicos En Pulgadas (Rosca NPT) **Racores-274**

Serie RM (10/32", 1/8", 1/4", 3/8", 1/2") **Racores-275**

Racores Metálicos Milimétricos (Rosca G)

Serie RM (M5, 1/8", 1/4", 3/8", 1/2") **Racores-277**



Racores En Acero Inoxidable 304

Racores Inoxidables En Pulgadas (Rosca NPT)

Serie RI (1/8", 1/4", 3/8", 1/2") **Racores-280**

Racores Inoxidables Milimétricos (Rosca G)

Serie RI (M5, 1/8", 1/4", 3/8", 1/2") **Racores-281**



Racores Plásticos

Racores Plásticos En Pulgadas (Rosca NPT)

Serie RP (10/32", 1/8", 1/4", 3/8", 1/2") **Racores-283**

Racores Plásticos Milimétricos (Rosca G)

Serie RP (M5, 1/8", 1/4", 3/8", 1/2") **Racores-288**

Racores Plásticos Milimétricos (Rosca PT)

Serie RP (1/8", 1/4", 3/8", 1/2") **Racores-294**



Racores Especiales

Racores Plásticos Two-Touch (Rosca R)

Serie RRP (1/8", 1/4", 3/8", 1/2") **Racores-295**

Racores Con Detención - Tipo Acople Rápido

Serie RD (1/8", 1/4", 3/8") **Racores-296**



Controles De Flujo Montaje Directo

Control De Flujo Con Cheque Pilotado

Serie RPC (Milimétrico) **Racores-297**

Control De Flujo Montaje Directo

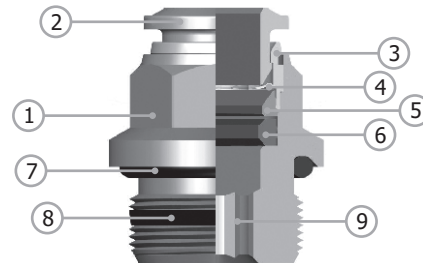
Serie RP **Racores-298**

Control De Flujo Montaje Directo

Serie RM **Racores-299**

Características

- Todas las roscas están fabricadas con junta de cierre que permiten un montaje rápido y sencillo de los circuitos neumáticos
- Excelente sujeción de las mangueras
- Racores rectos con hexágono interno que permite el montaje en espacios reducidos
- Seguros y resistentes a la corrosión



Materiales y Componentes

| Item | Parte | Material |
|------|----------------------|----------------------|
| 1 | Cuerpo | Bronce Niquelado |
| 2 | Anillo Colector | Bronce Niquelado |
| 3 | Capsula | Bronce Niquelado |
| 4 | Anillo de Sujeción | Acero Inoxidable 304 |
| 5 | Anillo de Seguridad | Tecnopolímero |
| 6 | Anillo de Labio | NBR |
| 7 | O-ring (Roscas G) | NBR |
| 8 | Empaque (Roscas NPT) | NBR |
| 9 | Hexágono Interno | |

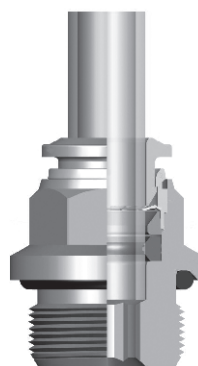
Datos Técnicos

Fluido:
Aire comprimido y vacío

Presión de Trabajo:
-1 a 15 Bar ~ -14,7 a 217 PSI

Temperatura de Trabajo:
-20°C a 80°C ~ -4°F a 176°F

Roscas:
Pulgadas - NPT
Milimétricos - G



El anillo de sujeción en acero inoxidable asegura el perfecto agarre de la manguera sin dañar la superficie

La conexión entre la manguera y el racor aseguran el agarre en condiciones extremas de impacto y vibración.

La forma geométrica de la junta asegura la estanqueidad para uso con vacío.

RACORES METALICOS - EN PULGADAS

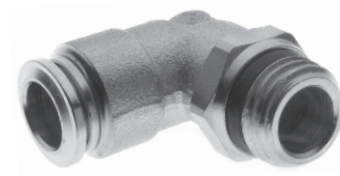
SERIE RM 10/32 - 1/8 - 1/4 - 3/8 - 1/2 NPT

Art



Racor Recto

| Referencia | NPT | OD |
|------------|--------|-------|
| RM102M502 | 10/32" | 1/4" |
| RM1020101 | 1/8" | 1/8" |
| RM1020102 | 1/8" | 1/4" |
| RM1020202 | 1/4" | 1/4" |
| RM1020209 | 1/4" | 5/16" |
| RM1020203 | 1/4" | 3/8" |
| RM1020302 | 3/8" | 1/4" |
| RM1020303 | 3/8" | 3/8" |
| RM1020304 | 3/8" | 1/2" |
| RM1020403 | 1/2" | 3/8" |
| RM1020404 | 1/2" | 1/2" |



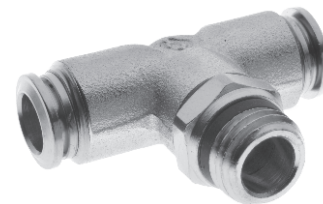
Racor Codo - Giratorio

| Referencia | NPT | OD |
|------------|--------|-------|
| RM104M502 | 10/32" | 1/4" |
| RM1040101 | 1/8" | 1/8" |
| RM1040102 | 1/8" | 1/4" |
| RM1040202 | 1/4" | 1/4" |
| RM1040209 | 1/4" | 5/16" |
| RM1040203 | 1/4" | 3/8" |
| RM1040302 | 3/8" | 1/4" |
| RM1040303 | 3/8" | 3/8" |
| RM1040304 | 3/8" | 1/2" |
| RM1040403 | 1/2" | 3/8" |
| RM1040404 | 1/2" | 1/2" |



Racor Tee Vertical - Giratorio

| Referencia | NPT | OD |
|------------|------|------|
| RM1080102 | 1/8" | 1/4" |
| RM1080202 | 1/4" | 1/4" |
| RM1080303 | 3/8" | 3/8" |
| RM1080404 | 1/2" | 1/2" |



Racor Tee Horizontal - Giratorio

| Referencia | NPT | OD |
|------------|------|-------|
| RM1090202 | 1/4" | 1/4" |
| RM1090209 | 1/4" | 5/16" |
| RM1090404 | 1/2" | 1/2" |

RACORES

RACORES METALICOS - EN PULGADAS

SERIE RM 10/32 - 1/8 - 1/4 - 3/8 - 1/2 NPT

Art



Unión Recta

| Referencia | OD |
|------------|------|
| RM11102 | 1/4" |
| RM11103 | 3/8" |
| RM11104 | 1/2" |



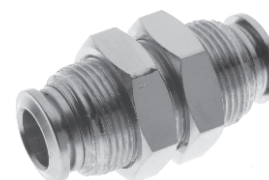
Unión Codo

| Referencia | OD |
|------------|------|
| RM11202 | 1/4" |
| RM11203 | 3/8" |
| RM11204 | 1/2" |



Unión Tee

| Referencia | OD |
|------------|------|
| RM11302 | 1/4" |
| RM11303 | 3/8" |
| RM11304 | 1/2" |



Unión Pasamuro

| Referencia | OD |
|------------|------|
| RM11602 | 1/4" |
| RM11603 | 3/8" |



Reducción

| Referencia | Conexión ID | OD |
|------------|-------------|-------|
| RM1200302 | 3/8 | 1/4" |
| RM1200309 | 3/8 | 5/16" |
| RM1200403 | 1/2 | 3/8" |

RACORES METALICOS - MILIMETRICOS

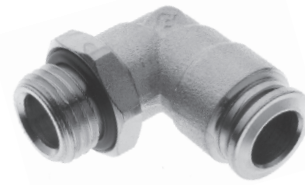
SERIE RM M5 - 1/8 - 1/4 - 3/8 - 1/2 ROSCA G

Art



Racor Recto

| Referencia | G | OD |
|------------|------|----|
| RM202M504 | M5 | 4 |
| RM202M506 | M5 | 6 |
| RM2020104 | 1/8" | 4 |
| RM2020106 | 1/8" | 6 |
| RM2020108 | 1/8" | 8 |
| RM2020204 | 1/4" | 4 |
| RM2020206 | 1/4" | 6 |
| RM2020208 | 1/4" | 8 |
| RM2020210 | 1/4" | 10 |
| RM2020308 | 3/8" | 8 |
| RM2020310 | 3/8" | 10 |
| RM2020312 | 3/8" | 12 |
| RM2020410 | 1/2" | 10 |
| RM2020412 | 1/2" | 12 |



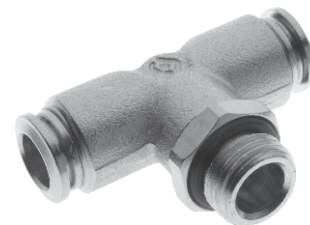
Racor Codo - Giratorio

| Referencia | G | OD |
|------------|------|----|
| RM204M504 | M5 | 4 |
| RM2040104 | 1/8" | 4 |
| RM2040106 | 1/8" | 6 |
| RM2040108 | 1/8" | 8 |
| RM2040204 | 1/4" | 4 |
| RM2040206 | 1/4" | 6 |
| RM2040208 | 1/4" | 8 |
| RM2040210 | 1/4" | 10 |
| RM2040308 | 3/8" | 8 |
| RM2040310 | 3/8" | 10 |
| RM2040312 | 3/8" | 12 |
| RM2040410 | 1/2" | 10 |
| RM2040412 | 1/2" | 12 |



Racor Tee Vertical - Giratorio

| Referencia | G | OD |
|------------|------|----|
| RM2080106 | 1/8" | 6 |
| RM2080206 | 1/4" | 6 |
| RM2080208 | 1/4" | 8 |



Racor Tee Horizontal - Giratorio

| Referencia | G | OD |
|------------|------|----|
| RM2090106 | 1/8" | 6 |
| RM2090206 | 1/4" | 6 |
| RM2090208 | 1/4" | 8 |

RACORES

RACORES METALICOS - MILIMETRICOS

SERIE RM M5 - 1/8 - 1/4 - 3/8 - 1/2 ROSCA G

Art



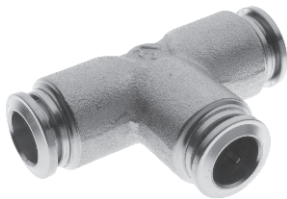
Unión Recta

| Referencia | OD |
|------------|----|
| RM21104 | 4 |
| RM21106 | 6 |
| RM21108 | 8 |
| RM21110 | 10 |
| RM21112 | 12 |



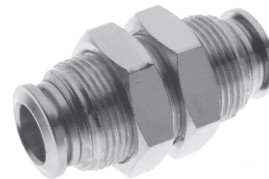
Unión Codo

| Referencia | OD |
|------------|----|
| RM21204 | 4 |
| RM21206 | 6 |
| RM21208 | 8 |
| RM21210 | 10 |
| RM21212 | 12 |



Unión Tee

| Referencia | OD |
|------------|----|
| RM21304 | 4 |
| RM21306 | 6 |
| RM21308 | 8 |
| RM21310 | 10 |
| RM21312 | 12 |



Unión Pasamuro

| Referencia | OD |
|------------|----|
| RM21606 | 6 |
| RM21608 | 8 |
| RM21610 | 10 |



Reducción

| Referencia | Conexión ID | OD |
|------------|-------------|----|
| RM2200604 | 6 | 4 |
| RM2200806 | 8 | 6 |
| RM2201008 | 10 | 8 |

RACORES EN ACERO INOXIDABLE 316 - EN PULGADAS

SERIE RI 1/8 - 1/4 - 3/8 - 1/2 NPT

Art



Racor Recto- Inox. 316

| Referencia | NPT | OD |
|------------|------|-------|
| RI1020102 | 1/8" | 1/4" |
| RI1020202 | 1/4" | 1/4" |
| RI1020209 | 1/4" | 5/16" |
| RI1020203 | 1/4" | 3/8" |
| RI1020303 | 3/8" | 3/8" |
| RI1020304 | 3/8" | 1/2" |
| RI1020404 | 1/2" | 1/2" |



Racor Codo - Giratorio - Inox. 316

| Referencia | NPT | OD |
|------------|------|-------|
| RI1040102 | 1/8" | 1/4" |
| RI1040202 | 1/4" | 1/4" |
| RI1040209 | 1/4" | 5/16" |
| RI1040203 | 1/4" | 3/8" |
| RI1040303 | 3/8" | 3/8" |
| RI1040304 | 3/8" | 1/2" |
| RI1040404 | 1/2" | 1/2" |



Racor Tee Horizontal - Giratorio - Inox. 316

| Referencia | NPT | OD |
|------------|------|-------|
| RI1090102 | 1/8" | 1/4" |
| RI1090202 | 1/4" | 1/4" |
| RI1090209 | 1/4" | 5/16" |
| RI1090303 | 3/8" | 3/8" |
| RI1090404 | 1/2" | 1/2" |

RACORES EN ACERO INOXIDABLE 316 - MILIMETRICOS

SERIE RI M5 - 1/8 - 1/4 - 3/8 - 1/2 ROSCA G

Art



Racor Recto- Inox. 316

| Referencia | G | OD |
|------------|------|----|
| RI202M504 | M5 | 4 |
| RI2020104 | 1/8" | 4 |
| RI2020106 | 1/8" | 6 |
| RI2020108 | 1/8" | 8 |
| RI2020204 | 1/4" | 4 |
| RI2020206 | 1/4" | 6 |
| RI2020208 | 1/4" | 8 |
| RI2020210 | 1/4" | 10 |
| RI2020310 | 3/8" | 10 |
| RI2020312 | 3/8" | 12 |
| RI2020412 | 1/2" | 12 |



Racor Codo - Giratorio - Inox. 316

| Referencia | G | OD |
|------------|------|----|
| RI204M504 | M5 | 4 |
| RI2040104 | 1/8" | 4 |
| RI2040106 | 1/8" | 6 |
| RI2040108 | 1/8" | 8 |
| RI2040204 | 1/4" | 4 |
| RI2040206 | 1/4" | 6 |
| RI2040208 | 1/4" | 8 |
| RI2040210 | 1/4" | 10 |
| RI2040310 | 3/8" | 10 |
| RI2040312 | 3/8" | 12 |
| RI2040412 | 1/2" | 12 |



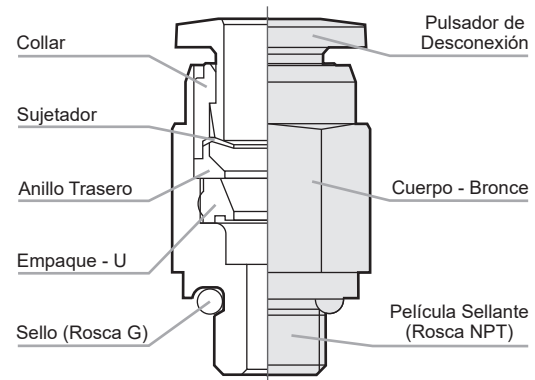
Racor Tee Horizontal - Giratorio - Inox. 316

| Referencia | G | OD |
|------------|------|----|
| RI2090106 | 1/8" | 6 |
| RI2090206 | 1/4" | 6 |
| RI2090208 | 1/4" | 8 |

RACORES

Características

- Permiten un montaje rápido y sencillo de los circuitos neumáticos
- Excelente sujeción de las mangueras
- Racores rectos con hexágono interno que permite el montaje en espacios reducidos
- Satisfacen las características de anti-contaminación



Datos Técnicos

Fluido:
Aire comprimido y vacío

Presión de Trabajo:
-1 a 10 Bar ~ -14,7 a 150 PSI

Temperatura de Trabajo:
0°C a 60°C ~ 32°F a 140°F

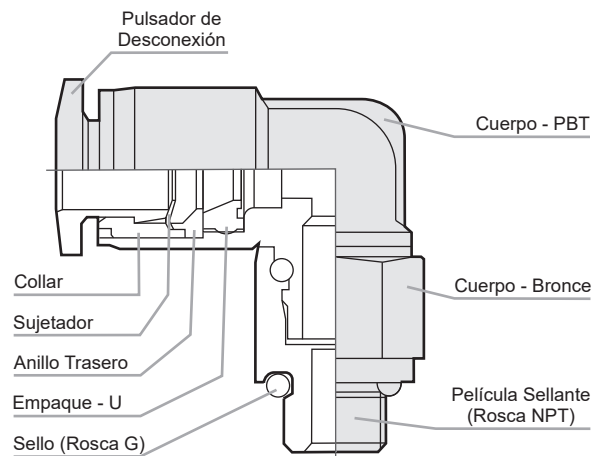
Roscas:
Pulgadas - NPT
Milimétricos - G

Materiales

Cuerpo : PBT
(Politereftalato de Butileno)

Roscas : Bronce Niquelado

Empaques : NBR



RACORES PLASTICOS - EN PULGADAS

SERIE RP 10/32 - 1/8 - 1/4 - 3/8 - 1/2 NPT

Art



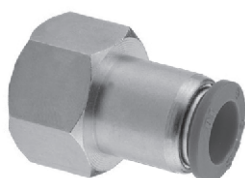
Racor Recto

| Referencia | NPT | OD |
|------------|--------|-------|
| RP102M502 | 10/32" | 1/4" |
| RP1020101 | 1/8" | 1/8" |
| RP1020102 | 1/8" | 1/4" |
| RP1020103 | 1/8" | 3/8" |
| RP1020109 | 1/8" | 5/16" |
| RP1020202 | 1/4" | 1/4" |
| RP1020209 | 1/4" | 5/16" |
| RP1020203 | 1/4" | 3/8" |
| RP1020204 | 1/4" | 1/2" |
| RP1020302 | 3/8" | 1/4" |
| RP1020309 | 3/8" | 5/16" |
| RP1020303 | 3/8" | 3/8" |
| RP1020304 | 3/8" | 1/2" |
| RP1020402 | 1/2" | 1/4" |
| RP1020409 | 1/2" | 5/16" |
| RP1020403 | 1/2" | 3/8" |
| RP1020404 | 1/2" | 1/2" |



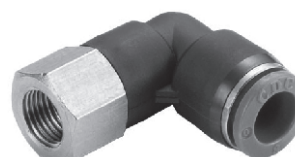
Racor Codo - Giratorio

| Referencia | NPT | OD |
|------------|--------|-------|
| RP104M502 | 10/32" | 1/4" |
| RP1040101 | 1/8" | 1/8" |
| RP1040102 | 1/8" | 1/4" |
| RP1040103 | 1/8" | 3/8" |
| RP1040109 | 1/8" | 5/16" |
| RP1040202 | 1/4" | 1/4" |
| RP1040209 | 1/4" | 5/16" |
| RP1040203 | 1/4" | 3/8" |
| RP1040204 | 1/4" | 1/2" |
| RP1040302 | 3/8" | 1/4" |
| RP1040309 | 3/8" | 5/16" |
| RP1040303 | 3/8" | 3/8" |
| RP1040304 | 3/8" | 1/2" |
| RP1040402 | 1/2" | 1/4" |
| RP1040409 | 1/2" | 5/16" |
| RP1040403 | 1/2" | 3/8" |
| RP1040404 | 1/2" | 1/2" |



Racor Recto Hembra

| Referencia | NPT | OD |
|------------|------|------|
| RP1030102 | 1/8" | 1/4" |
| RP1030202 | 1/4" | 1/4" |
| RP1030203 | 1/4" | 3/8" |



Racor Codo Hembra

| Referencia | NPT | OD |
|------------|------|-------|
| RP1050102 | 1/8" | 1/4" |
| RP1050202 | 1/4" | 1/4" |
| RP1050203 | 1/4" | 3/8" |
| RP1050209 | 1/8" | 5/16" |

RACORES

RACORES PLASTICOS - EN PULGADAS

SERIE RP 10/32 - 1/8 - 1/4 - 3/8 - 1/2 NPT

Art



Unión Tee

| Referencia | OD |
|------------|-------|
| RP11302 | 1/4" |
| RP11309 | 5/16" |
| RP11303 | 3/8" |
| RP11304 | 1/2" |



Racor Yee- Giratorio

| Referencia | NPT | OD |
|------------|------|-------|
| RP1100102 | 1/8" | 1/4" |
| RP1100202 | 1/4" | 1/4" |
| RP1100209 | 1/4" | 5/16" |
| RP1100303 | 3/8" | 3/8" |



Unión Recta

| Referencia | OD |
|------------|-------|
| RP11102 | 1/4" |
| RP11109 | 5/16" |
| RP11103 | 3/8" |
| RP11104 | 1/2" |



Unión Codo

| Referencia | OD |
|------------|-------|
| RP11202 | 1/4" |
| RP11209 | 5/16" |
| RP11203 | 3/8" |
| RP11204 | 1/2" |



Racor Tee Horizontal- Giratorio

| Referencia | NPT | OD |
|------------|------|-------|
| RP1090102 | 1/8" | 1/4" |
| RP1090202 | 1/4" | 1/4" |
| RP1090209 | 1/4" | 5/16" |
| RP1090203 | 1/4" | 3/8" |
| RP1090302 | 3/8" | 1/4" |
| RP1090303 | 3/8" | 3/8" |
| RP1090304 | 3/8" | 1/2" |
| RP1090403 | 1/2" | 3/8" |
| RP1090404 | 1/2" | 1/2" |



Unión Cruz

| Referencia | OD |
|------------|------|
| RP11502 | 1/4" |
| RP11503 | 3/8" |
| RP11504 | 1/2" |



Unión Yee

| Referencia | OD |
|------------|------|
| RP11402 | 1/4" |
| RP11403 | 3/8" |
| RP11404 | 1/2" |



Unión Codo Pasamuro

| Referencia | OD | T |
|------------|------|---------|
| RP11702 | 1/4" | M14x1.0 |
| RP11703 | 3/8" | M20x1.0 |



Unión Pasamuro

| Referencia | OD | T |
|------------|-------|---------|
| RP11602 | 1/4" | M14x1.0 |
| RP11609 | 5/16" | M16x1.0 |
| RP11603 | 3/8" | M20x1.0 |
| RP11604 | 1/2" | M22x1.0 |

RACORES PLASTICOS - EN PULGADAS

SERIE RP 10/32 - 1/8 - 1/4 - 3/8 - 1/2 NPT

Art



Reducción Manguera

| Referencia | OD 1 | OD 2 |
|------------|-------|-------|
| RP1190902 | 5/16" | 1/4" |
| RP1190302 | 3/8" | 1/4" |
| RP1190309 | 3/8" | 5/16" |
| RP1190403 | 1/2" | 3/8" |



Reducción Para Racor

| Referencia | ID | OD 2 |
|------------|-------|-------|
| RP1200902 | 5/16" | 1/4" |
| RP1200302 | 3/8" | 1/4" |
| RP1200309 | 3/8" | 5/16" |
| RP1200402 | 1/2" | 1/4" |
| RP1200403 | 1/2" | 3/8" |



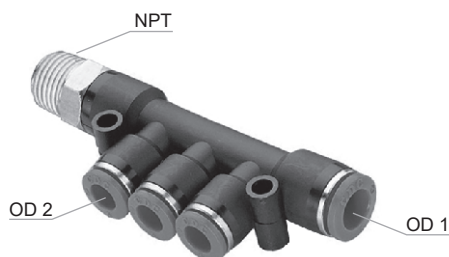
Tapón Para Racor

| Referencia | OD |
|------------|-------|
| RP12102 | 1/4" |
| RP12109 | 5/16" |
| RP12103 | 3/8" |



Tapón Para Manguera

| Referencia | OD |
|------------|-------|
| RP12202 | 1/4" |
| RP12209 | 5/16" |
| RP12203 | 3/8" |
| RP12204 | 1/2" |



Manifold- 4 Salidas

| Referencia | NPT | OD 1 | OD 2 |
|------------|------|-------|-------|
| RP1230209 | 1/4" | 5/16" | 1/4" |
| RP1230303 | 3/8" | 3/8" | 5/16" |

RACORES PLASTICOS - MILIMETRICOS

SERIE RP M5 - 1/8 - 1/4 - 3/8 - 1/2 Rosca G

Art



Racor Recto

| Referencia | G | OD |
|------------|------|----|
| RP202M504 | M5 | 4 |
| RP202M506 | M5 | 6 |
| RP2020104 | 1/8" | 4 |
| RP2020106 | 1/8" | 6 |
| RP2020108 | 1/8" | 8 |
| RP2020110 | 1/8" | 10 |
| RP2020204 | 1/4" | 4 |
| RP2020206 | 1/4" | 6 |
| RP2020208 | 1/4" | 8 |
| RP2020210 | 1/4" | 10 |
| RP2020212 | 1/4" | 12 |
| RP2020306 | 3/8" | 6 |
| RP2020308 | 3/8" | 8 |
| RP2020310 | 3/8" | 10 |
| RP2020312 | 3/8" | 12 |
| RP2020406 | 1/2" | 6 |
| RP2020408 | 1/2" | 8 |
| RP2020410 | 1/2" | 10 |
| RP2020412 | 1/2" | 12 |
| RP2020416 | 1/2" | 16 |



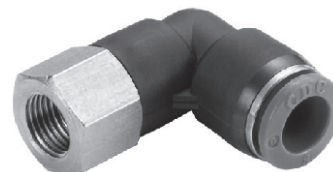
Racor Codo - Giratorio

| Referencia | G | OD |
|------------|------|----|
| RP204M504 | M5 | 4 |
| RP204M506 | M5 | 6 |
| RP2040104 | 1/8" | 4 |
| RP2040106 | 1/8" | 6 |
| RP2040108 | 1/8" | 8 |
| RP2040110 | 1/8" | 10 |
| RP2040204 | 1/4" | 4 |
| RP2040206 | 1/4" | 6 |
| RP2040208 | 1/4" | 8 |
| RP2040210 | 1/4" | 10 |
| RP2040212 | 1/4" | 12 |
| RP2040306 | 3/8" | 6 |
| RP2040308 | 3/8" | 8 |
| RP2040310 | 3/8" | 10 |
| RP2040312 | 3/8" | 12 |
| RP2040406 | 1/2" | 6 |
| RP2040408 | 1/2" | 8 |
| RP2040410 | 1/2" | 10 |
| RP2040412 | 1/2" | 12 |
| RP2040416 | 1/2" | 16 |



Racor Recto Hembra

| Referencia | G | OD |
|------------|------|----|
| RP2030106 | 1/8" | 6 |
| RP2030108 | 1/8" | 8 |
| RP2030206 | 1/4" | 6 |
| RP2030208 | 1/4" | 8 |



Racor Codo Hembra

| Referencia | G | OD |
|------------|------|----|
| RP2050106 | 1/8" | 6 |
| RP2050108 | 1/8" | 8 |
| RP2050206 | 1/4" | 6 |
| RP2050208 | 1/4" | 8 |

RACORES PLASTICOS - MILIMETRICOS

SERIE RP M5 - 1/8 - 1/4 - 3/8 - 1/2 Rosca G

Art



Racor Codo Extendido

| Referencia | G | OD |
|------------|------|----|
| RP2060104 | 1/8" | 4 |
| RP2060106 | 1/8" | 6 |
| RP2060108 | 1/8" | 8 |
| RP2060206 | 1/4" | 6 |
| RP2060208 | 1/4" | 8 |
| RP2060210 | 1/4" | 10 |



Racor Codo Banjo

| Referencia | G | OD |
|------------|------|----|
| RP2070104 | 1/8" | 4 |
| RP2070106 | 1/8" | 6 |
| RP2070108 | 1/8" | 8 |
| RP2070206 | 1/4" | 6 |
| RP2070208 | 1/4" | 8 |
| RP2070210 | 1/4" | 10 |



Racor Tee Horizontal- Giratorio

| Referencia | G | OD |
|------------|------|----|
| RP209M504 | M5 | 4 |
| RP209M506 | M5 | 6 |
| RP2090104 | 1/8" | 4 |
| RP2090106 | 1/8" | 6 |
| RP2090108 | 1/8" | 8 |
| RP2090204 | 1/4" | 4 |
| RP2090206 | 1/4" | 6 |
| RP2090208 | 1/4" | 8 |
| RP2090210 | 1/4" | 10 |
| RP2090306 | 3/8" | 6 |
| RP2090308 | 3/8" | 8 |
| RP2090310 | 3/8" | 10 |
| RP2090312 | 3/8" | 12 |
| RP2090410 | 1/2" | 10 |
| RP2090412 | 1/2" | 12 |
| RP2090416 | 1/2" | 16 |



Racor Yee- Giratorio

| Referencia | G | OD |
|------------|------|----|
| RP2100106 | 1/8" | 6 |
| RP2100206 | 1/4" | 6 |
| RP2100208 | 1/4" | 8 |
| RP2100310 | 3/8" | 10 |

RACORES

RACORES PLASTICOS - MILIMETRICOS

SERIE RP M5 - 1/8 - 1/4 - 3/8 - 1/2 Rosca G

Art



Unión Recta

| Referencia | OD |
|------------|----|
| RP21104 | 4 |
| RP21106 | 6 |
| RP21108 | 8 |
| RP21110 | 10 |
| RP21112 | 12 |
| RP21116 | 16 |



Unión Codo

| Referencia | OD |
|------------|----|
| RP21204 | 4 |
| RP21206 | 6 |
| RP21208 | 8 |
| RP21210 | 10 |
| RP21212 | 12 |
| RP21216 | 16 |



Unión Tee

| Referencia | OD |
|------------|----|
| RP21304 | 4 |
| RP21306 | 6 |
| RP21308 | 8 |
| RP21310 | 10 |
| RP21312 | 12 |



Unión Yee

| Referencia | OD |
|------------|----|
| RP21404 | 4 |
| RP21406 | 6 |
| RP21408 | 8 |
| RP21410 | 10 |
| RP21412 | 12 |



Unión Cruz

| Referencia | OD |
|------------|----|
| RP21504 | 4 |
| RP21506 | 6 |
| RP21508 | 8 |
| RP21510 | 10 |



Unión Pasamuro

| Referencia | OD | T |
|------------|----|---------|
| RP21604 | 4 | M12x1.0 |
| RP21606 | 6 | M14x1.0 |
| RP21608 | 8 | M16x1.0 |
| RP21610 | 10 | M20x1.0 |
| RP21612 | 12 | M22x1.0 |

RACORES PLASTICOS - MILIMETRICOS

SERIE RP M5 - 1/8 - 1/4 - 3/8 - 1/2 Rosca G

Art



Unión Codo Pasamuro

| Referencia | OD | T |
|------------|----|---------|
| RP21704 | 4 | M12x1.0 |
| RP21706 | 6 | M14x1.0 |
| RP21708 | 8 | M16x1.0 |



Acople Pitorra

| Referencia | OD |
|------------|----|
| RP21806 | 6 |
| RP21808 | 8 |
| RP21810 | 10 |
| RP21812 | 12 |



Reducción Manguera

| Referencia | OD 1 | OD 2 |
|------------|------|------|
| RP2190604 | 6 | 4 |
| RP2190806 | 8 | 6 |
| RP2191006 | 10 | 6 |
| RP2191008 | 10 | 8 |
| RP2191208 | 12 | 8 |
| RP2191210 | 12 | 10 |



Reducción

| Referencia | ID | OD |
|------------|----|----|
| RP2200604 | 6 | 4 |
| RP2200806 | 8 | 6 |
| RP2201006 | 10 | 6 |
| RP2201008 | 10 | 8 |
| RP2201206 | 12 | 6 |
| RP2201208 | 12 | 8 |
| RP2201210 | 12 | 10 |



Tapón Racor

| Referencia | OD |
|------------|----|
| RP22104 | 4 |
| RP22106 | 6 |
| RP22108 | 8 |
| RP22110 | 10 |
| RP22112 | 12 |



Tapón Manguera

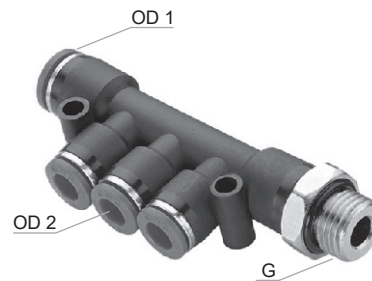
| Referencia | OD |
|------------|----|
| RP22204 | 4 |
| RP22206 | 6 |
| RP22208 | 8 |
| RP22210 | 10 |
| RP22212 | 12 |

RACORES

RACORES PLASTICOS - MILIMETRICOS

SERIE RP M5 - 1/8 - 1/4 - 3/8 - 1/2 Rosca G

Art



Manifold- 4 Salidas

| Referencia | G | OD 1 | OD 2 |
|------------|------|------|------|
| RP2230208 | 1/4" | 8 | 6 |
| RP2230310 | 3/8" | 10 | 8 |



Manifold- 6 Salidas

| Referencia | G | OD |
|------------|------|----|
| RP2240206 | 1/4" | 6 |
| RP2240308 | 3/8" | 8 |
| RP2240310 | 3/8" | 10 |

RACORES PLASTICOS - MILIMETRICOS - ROSCA PT (R)

SERIE RP , Rosca PT (R) Especiales para instalar en roscas NPT para usar mangueras milimétrica

Art



Racor Recto

| Referencia | PT (R) | OD |
|------------|--------|----|
| RP3020104 | 1/8" | 4 |
| RP3020106 | 1/8" | 6 |
| RP3020108 | 1/8" | 8 |
| RP3020110 | 1/8" | 10 |
| RP3020204 | 1/4" | 4 |
| RP3020206 | 1/4" | 6 |
| RP3020208 | 1/4" | 8 |
| RP3020210 | 1/4" | 10 |
| RP3020212 | 1/4" | 12 |
| RP3020306 | 3/8" | 6 |
| RP3020308 | 3/8" | 8 |
| RP3020310 | 3/8" | 10 |
| RP3020312 | 3/8" | 12 |
| RP3020406 | 1/2" | 6 |
| RP3020408 | 1/2" | 8 |
| RP3020410 | 1/2" | 10 |
| RP3020412 | 1/2" | 12 |
| RP3020416 | 1/2" | 16 |



Racor Codo - Giratorio

| Referencia | PT (R) | OD |
|------------|--------|----|
| RP3040104 | 1/8" | 4 |
| RP3040106 | 1/8" | 6 |
| RP3040108 | 1/8" | 8 |
| RP3040110 | 1/8" | 10 |
| RP3040112 | 1/8" | 12 |
| RP3040204 | 1/4" | 4 |
| RP3040206 | 1/4" | 6 |
| RP3040208 | 1/4" | 8 |
| RP3040210 | 1/4" | 10 |
| RP3040212 | 1/4" | 12 |
| RP3040306 | 3/8" | 6 |
| RP3040308 | 3/8" | 8 |
| RP3040310 | 3/8" | 10 |
| RP3040312 | 3/8" | 12 |
| RP3040406 | 1/2" | 6 |
| RP3040408 | 1/2" | 8 |
| RP3040410 | 1/2" | 10 |
| RP3040412 | 1/2" | 12 |
| RP3040416 | 1/2" | 16 |



Racor Tee Horizontal- Giratorio

| Referencia | PT (R) | OD |
|------------|--------|----|
| RP3090104 | 1/8" | 4 |
| RP3090106 | 1/8" | 6 |
| RP3090108 | 1/8" | 8 |
| RP3090204 | 1/4" | 4 |
| RP3090206 | 1/4" | 6 |
| RP3090208 | 1/4" | 8 |
| RP3090210 | 1/4" | 10 |
| RP3090306 | 3/8" | 6 |
| RP3090308 | 3/8" | 8 |
| RP3090310 | 3/8" | 10 |
| RP3090312 | 3/8" | 12 |
| RP3090410 | 1/2" | 10 |
| RP3090412 | 1/2" | 12 |
| RP3090416 | 1/2" | 16 |



Racor Yee- Giratorio

| Referencia | PT (R) | OD |
|------------|--------|----|
| RP3100106 | 1/8" | 6 |
| RP3100206 | 1/4" | 6 |
| RP3100208 | 1/4" | 8 |
| RP3100310 | 3/8" | 10 |

Características

- El mecanismo de la tuerca de fijación proporciona una conexión neumática semipermanente
- Resistente a la vibración y a los movimientos multidireccionales de la tubería
- Buena tolerancia a la contaminación, la corrosión y químicos
- Composición plástica no magnética

Datos Técnicos

Fluido:
Aire comprimido y vacío

Presión de Trabajo:
-1 a 10 Bar ~ -14,7 a 150 PSI

Temperatura de Trabajo:
0°C a 60°C ~ 32°F a 140°F



Racor Recto - Azul

| Referencia | R | OD |
|------------|------|----|
| RRP2020106 | 1/8" | 6 |
| RRP2020108 | 1/8" | 8 |
| RRP2020206 | 1/4" | 6 |
| RRP2020208 | 1/4" | 8 |
| RRP2020210 | 1/4" | 10 |
| RRP2020212 | 1/4" | 12 |
| RRP2020308 | 3/8" | 8 |
| RRP2020310 | 3/8" | 10 |
| RRP2020312 | 3/8" | 12 |
| RRP2020412 | 1/2" | 12 |



Racor Codo - Azul

| Referencia | R | OD |
|------------|------|----|
| RRP2040106 | 1/8" | 6 |
| RRP2040108 | 1/8" | 8 |
| RRP2040206 | 1/4" | 6 |
| RRP2040208 | 1/4" | 8 |
| RRP2040210 | 1/4" | 10 |
| RRP2040212 | 1/4" | 12 |
| RRP2040308 | 3/8" | 8 |
| RRP2040310 | 3/8" | 10 |
| RRP2040312 | 3/8" | 12 |
| RRP2040412 | 1/2" | 12 |



Unión Tee - Azul

| Referencia | OD |
|------------|----|
| RRP21306 | 6 |
| RRP21308 | 8 |
| RRP21310 | 10 |
| RRP21312 | 12 |

RACOR CON DETENCION - TIPO ACOPLE RAPIDO

SERIE RD - MILIMETRICOS Y EN PULGADAS

Art



Características

- El aire es completamente bloqueado al retirar la manguera
- Excelente sujeción de las mangueras
- Ideal para puntos donde se requiere la conexión y desconexión frecuentes
- Satisfacen las características de anti-contaminación



En Pulgadas

| Referencia | NPT | OD |
|------------|------|-------|
| RD1020102 | 1/8" | 1/4" |
| RD1020202 | 1/4" | 1/4" |
| RD1020209 | 1/4" | 5/16" |
| RD1020303 | 3/8" | 3/8" |

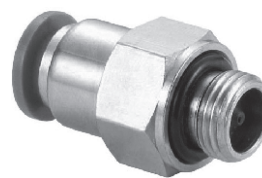
Datos Técnicos

Fluido:
Aire comprimido

Presión de Trabajo:
-1 a 10 Bar ~ -14,7 a 150 PSI

Temperatura de Trabajo:
0°C a 60°C ~ 32°F a 140°F

Roscas:
Pulgadas - NPT
Milimétricos - G



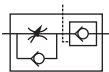
Milimétricos

| Referencia | G | OD |
|------------|------|----|
| RD2020104 | 1/8" | 4 |
| RD2020106 | 1/8" | 6 |
| RD2020206 | 1/4" | 6 |
| RD2020208 | 1/4" | 8 |

Materiales

Cuerpo : Bronce Niquelado

Empaques : NBR



Características

- Garantizan la parada intermedia de un cilindro al bloquear la salida del aire
- Permiten controlar una velocidad constante del cilindro fácilmente
- Con un sistema de bloqueo para evitar manipulaciones no deseadas
- Fácil instalación al fijarlos directamente a las conexiones del cilindro
- Regulación de la velocidad en un solo sentido

Milimétricos

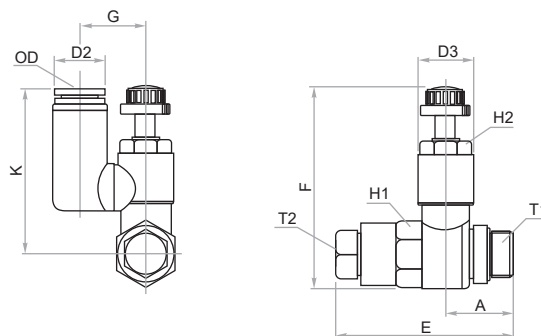
| Referencia | G | OD |
|------------|------|----|
| RPC10106 | 1/8" | 6 |
| RPC10206 | 1/4" | 6 |
| RPC10208 | 1/4" | 8 |
| RPC10308 | 3/8" | 8 |
| RPC10310 | 3/8" | 10 |

Datos Técnicos

Fluido:
Aire comprimido

Presión de Trabajo:
-1 a 10 Bar ~ -14,7 a 150 PSI

Temperatura de Trabajo:
0°C a 60°C ~ 32°F a 140°F

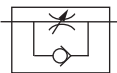


| Referencia | OD | A | D2 | D3 | E | F |
|------------|----|------|------|------|------|------|
| RPC10106 | 6 | 16,0 | 12,6 | 12,1 | 35,4 | 48,4 |
| RPC10206 | 6 | 18,1 | 12,6 | 15,4 | 42,0 | 60,4 |
| RPC10208 | 8 | 18,1 | 14,9 | 15,4 | 42,0 | 60,4 |
| RPC10308 | 8 | 21,0 | 15,1 | 20,3 | 49,7 | 63,4 |
| RPC10310 | 10 | 21,0 | 17,6 | 20,3 | 49,7 | 63,4 |

| Referencia | G | H1 | H2 | K | T1 | T2 |
|------------|------|----|----|------|-------|-------|
| RPC10106 | 16,1 | 12 | 10 | 38,9 | G 1/8 | M5 |
| RPC10206 | 19,4 | 17 | 13 | 44,3 | G 1/4 | G 1/8 |
| RPC10208 | 18,4 | 17 | 13 | 46,7 | G 1/4 | G 1/8 |
| RPC10308 | 23,4 | 19 | 17 | 50,7 | G 3/8 | G 1/8 |
| RPC10310 | 23,4 | 19 | 17 | 53,0 | G 3/8 | G 1/8 |

Materiales

Cuerpo : PBT
Perilla : Bronce Niquelado
Empaques : NBR



Características

- Permiten controlar una velocidad constante del cilindro fácilmente
- Con un sistema de bloqueo para evitar manipulaciones no deseadas
- Fácil instalación al fijarlos directamente a las conexiones del cilindro
- Regulación de la velocidad en un solo sentido

Control de Flujo en Pulgadas

| Código | NPT | OD | Flujo l/min. |
|-----------|------|------|--------------|
| RP1010102 | 1/8" | 1/4" | 350 |
| RP1010202 | 1/4" | 1/4" | 600 |
| RP1010203 | 1/4" | 3/8" | 640 |
| RP1010302 | 3/8" | 1/4" | 1.100 |
| RP1010303 | 3/8" | 3/8" | 1.100 |
| RP1010304 | 3/8" | 1/2" | 1.100 |
| RP1010403 | 1/2" | 3/8" | 1.100 |
| RP1010404 | 1/2" | 1/2" | 1.700 |

Datos Técnicos

Fluido:
Aire comprimido

Presión de Trabajo:
-1 a 10 Bar ~ -14,7 a 150 PSI

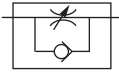
Temperatura de Trabajo:
0°C a 60°C ~ 32°F a 140°F

Control de Flujo Milimetrico

| Código | Rosca G | OD | Flujo l/min. |
|-----------|---------|----|--------------|
| RP201M504 | M5 | 4 | 100 |
| RP201M506 | M5 | 6 | 100 |
| RP2010106 | 1/8" | 6 | 350 |
| RP2010108 | 1/8" | 8 | 350 |
| RP2010206 | 1/4" | 6 | 600 |
| RP2010208 | 1/4" | 8 | 640 |
| RP2010210 | 1/4" | 10 | 640 |
| RP2010306 | 3/8" | 6 | 1.100 |
| RP2010308 | 3/8" | 8 | 1.100 |
| RP2010310 | 3/8" | 10 | 1.100 |
| RP2010312 | 3/8" | 12 | 1.100 |
| RP2010412 | 1/2" | 10 | 1.700 |
| RP2010412 | 1/2" | 12 | 1.700 |

Materiales

Cuerpo : PBT
Perilla : Bronce Niquelado
Empaques : NBR



Estos controles son especiales para instalar en roscas NPT para usar mangueras milimétricas



Características

- Permiten controlar una velocidad constante del cilindro fácilmente
- Con un sistema de bloqueo para evitar manipulaciones no deseadas
- Fácil instalación al fijarlos directamente a las conexiones del cilindro
- Regulación de la velocidad en un solo sentido

Control de Flujo Milimetrico - Rosca PT(R)

| Código | PT (R) | OD | Flujo l/min. |
|-----------|--------|----|--------------|
| RP3010106 | 1/8" | 6 | 350 |
| RP3010108 | 1/8" | 8 | 350 |
| RP3010206 | 1/4" | 6 | 600 |
| RP3010208 | 1/4" | 8 | 640 |
| RP3010210 | 1/4" | 10 | 640 |
| RP3010306 | 3/8" | 6 | 1.100 |
| RP3010308 | 3/8" | 8 | 1.100 |
| RP3010310 | 3/8" | 10 | 1.100 |
| RP3010312 | 3/8" | 12 | 1.100 |
| RP3010410 | 1/2" | 10 | 1.700 |
| RP3010412 | 1/2" | 12 | 1.700 |

Datos Técnicos

Fluido:
Aire comprimido

Presión de Trabajo:
Roca PT
-1 a 10 Bar ~ -14,7 a 150 PSI

Temperatura de Trabajo
Rosca G:
-20°C a 80°C

Control de
Flujo Metálico



Control de Flujo Milimetrico - Rosca G

| Referencia | Rosca G | OD | Flujo l/min. |
|------------|---------|-------|--------------|
| RM201M504 | M5 | 4 mm | 42 |
| RM201M506 | M5 | 6 mm | 42 |
| RM2010106 | 1/8" | 6 mm | 160 |
| RM2010108 | 1/8" | 8 mm | 160 |
| RM2010206 | 1/4" | 6 mm | 400 |
| RM2010208 | 1/4" | 8 mm | 400 |
| RM2010210 | 1/4" | 10 mm | 400 |
| RM2010308 | 3/8" | 8 mm | 1.000 |
| RM2010310 | 3/8" | 10 mm | 1.000 |
| RM2010412 | 1/2" | 12 mm | 1.300 |

Materiales

Cuerpo : PBT
Perilla : Bronce Niquelado
Empaques : NBR

